

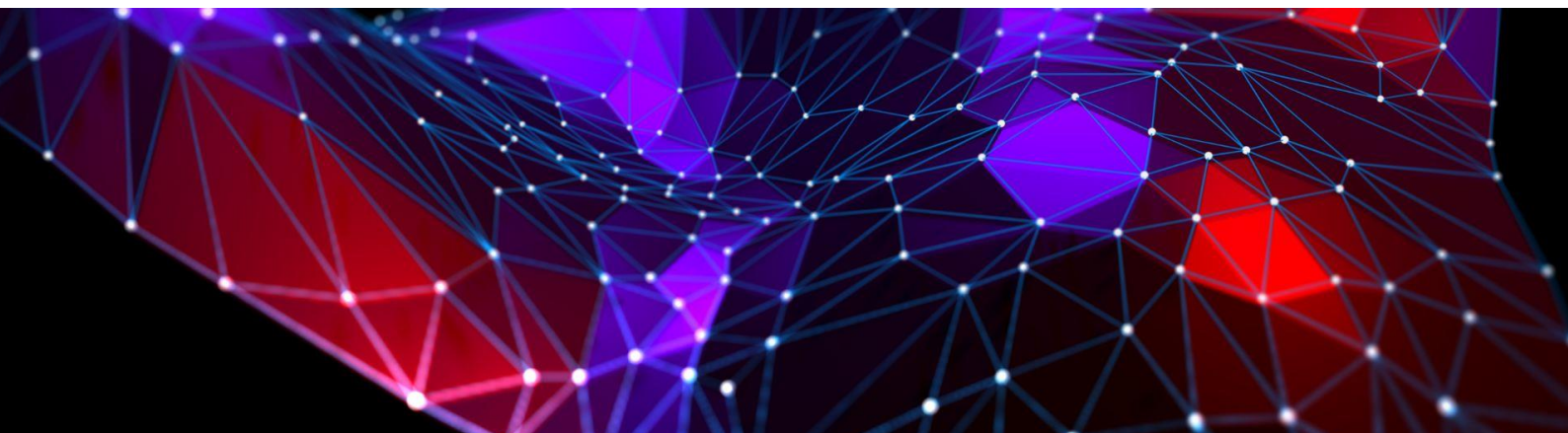
Subscription Manager Consumer

SM-DP+

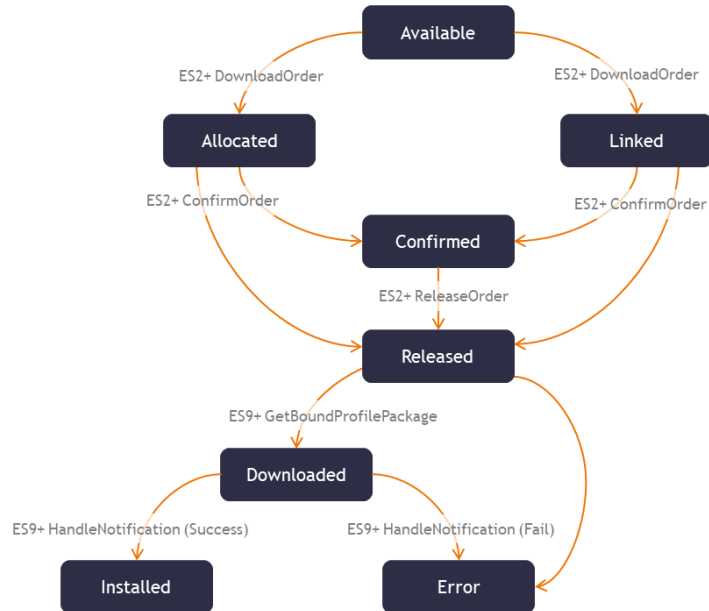
The functional scope of the Subscription Management platform is to handle the network access credentials securely in the form of MNO profiles and to provide these profiles to the eUICC in consumer devices. A close integration of the Subscription Management components with the MNO infrastructure and adoption of the supported workflows for the MNO business processes are the key to success for deploying the Subscription Management services.

The achelos Subscription Manager is compliant with:

- GSMA: Embedded SIM Task Force Requirements and Use Cases, Version 1.0
- GSMA: SGP.21 - RSP Architecture, Version 2.2
- GSMA: SGP.22 - RSP Technical Specification, Version 2.2
- GSMA: SGP.23 - RSP Test Specification, Version 1.6
- GSMA: SGP.24 - RSP Compliance Process, Version 2.2
- Trusted Connectivity Alliance (TCA): eUICC Profile Package - Interoperable Format Technical Specification, Version 2.2
- GSMA: FS.08 - GSMA SAS Standard for Subscription Manager Roles, Version 3.0
- GSMA: FS.09 - SAS-SM Methodology, Version 6.0
- GSMA: FS.17 - GSMA SAS Consolidated Security Requirements, Version 4.0



The **SM-DP+**, similar to the SM-DP in the M2M solution, is responsible for creating and protecting operator credentials, i.e. the profile. However, as it comprises the functions of the SM-SR for profile download and remote management it carries the “+” in its name. The core of the SM-DP+ is the service to manage the lifecycle of MNO profiles and deliver them to devices compatible with GSMA RSP specification..



All core components are built in the form of microservices and are loosely coupled, communicating via TCP/HTTP(S)/MessageBroker interface for asynchronous and via



TCP/HTTP(S) interface for synchronous data exchange, providing a high level of cohesion between the services. This approach has been selected in order to achieve excellent horizontal scalability of the complete system and to significantly improve system testability.

Interface Off-card	End Points	GSMA Standard	Support	Comment
ES2+	MNO – SM-DP+	yes	yes	The ES2+ interface is used by the operator to order profiles for specific eUICCs as well as other administrative functions
ES9+	SM-DP+ - LPD	yes	yes	This interface is used to provide secure transport for the delivery of the encrypted Bound Profile Package between the SM-DP+ and the LPA (LPD)
ES11	LDS – SM-DS	yes	yes	This interface allows the LDS to retrieve Event Records for the respective eUICC
ES12	SM-DP+ - SM-DS	yes	yes	This interface allows any SM-DP+ to issue or remove Event Registrations on the SM-DS
ES15	SM-DS – SM-DS	yes	yes	In the case of deployments with cascaded SM-DSs, the ES15 interface is used to connect the SM-DSs

Interface eUICC	End Points	GSMA Standard	Support	Comment
ES8+	SM-DP+ - eUICC	yes	yes	<p>This interface provides a secure end-to-end channel between the SM-DP+ and the eUICC for the administration of the ISD-P and the associated profile during download and installation</p> <p>achelos' SM-DP supports profile descriptions in the format defined by TCA (ex. SIMalliance) [Ref6]</p>